

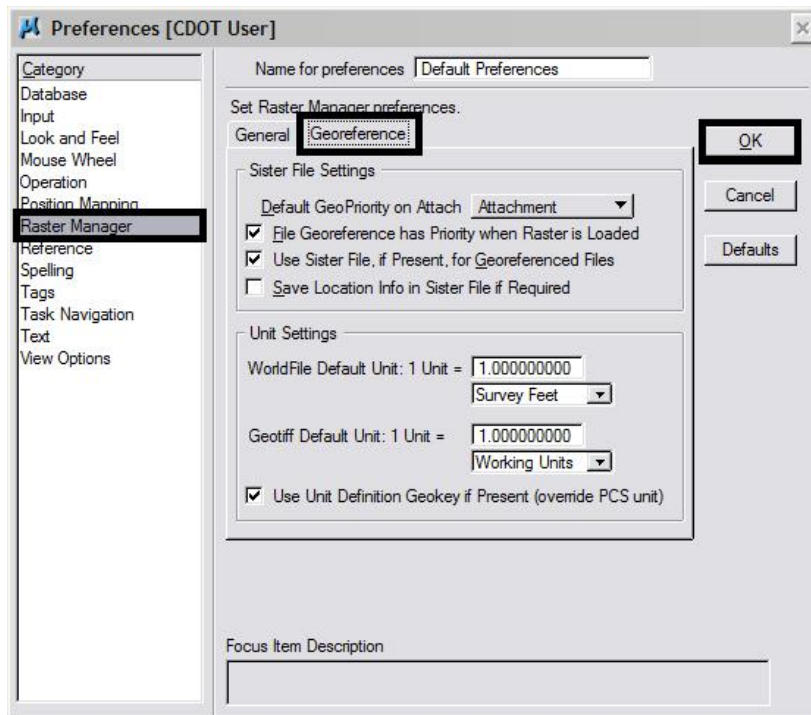
CDOT Using Georeferenced Images in Raster Manager



This document guides you through the Raster Manager settings in MicroStation for accurate placement of georeferenced image files. Setting the default Raster Manager preferences (steps 1-9) only needs to be done once. If your Raster Manager preferences have been previously set correctly you may proceed directly to step 10.

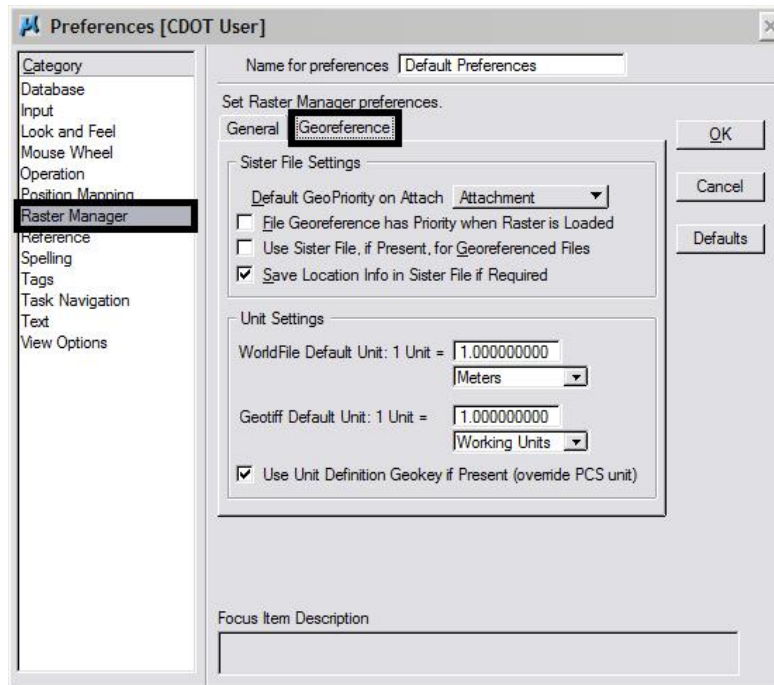
Setting the Default Preferences

1. From the MicroStation pull-down menu select **Workspace > Preferences**. The Preferences dialog will appear.
2. Under the **Category** list on the left pane, select **Raster Manager** then select the **Georeference** tab on the right pane. If preferences match the picture below preferences are set correctly. <D> **OK** and proceed to step 10.
3. Select the **Raster Manager Category** list in the left pane and then select the Georeference tab in the **Category** list in the left pane. If preferences match the picture below preferences are set correctly. <D> **OK** and proceed to step 10.

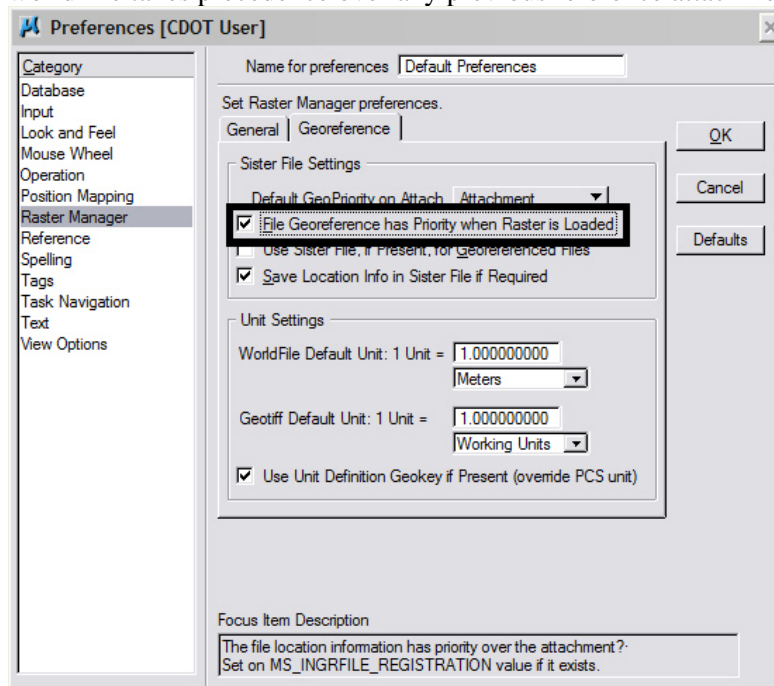


CDOT Using Georeferenced Images in Raster Manager.pdf

4. If preferences match the figure below follow steps 4-9 for the required changes and a brief explanation of what each change does.

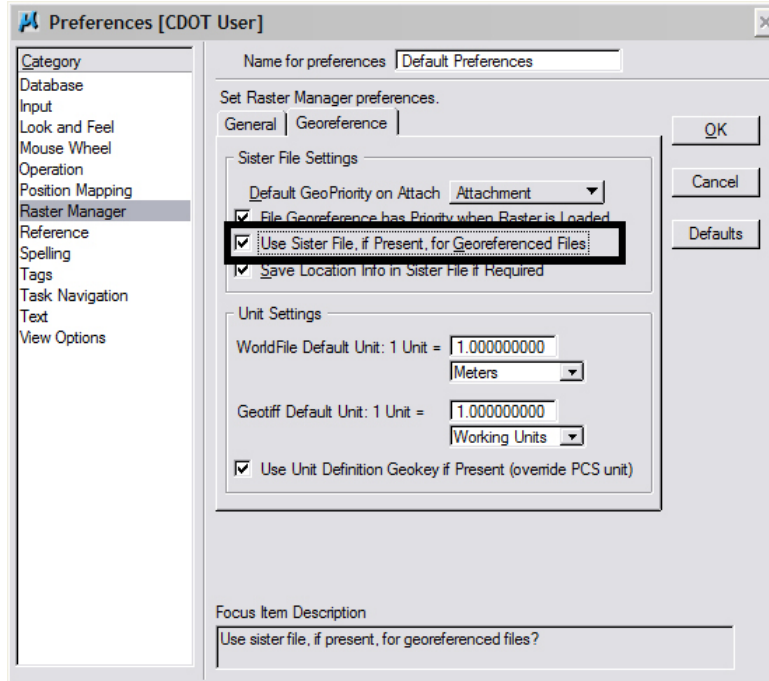


5. Place a check in the checkbox next to the preference for **File Georeference Has Priority**. When this setting is on, the georeferencing information contained in the world file takes precedence over any previous reference attachment information.

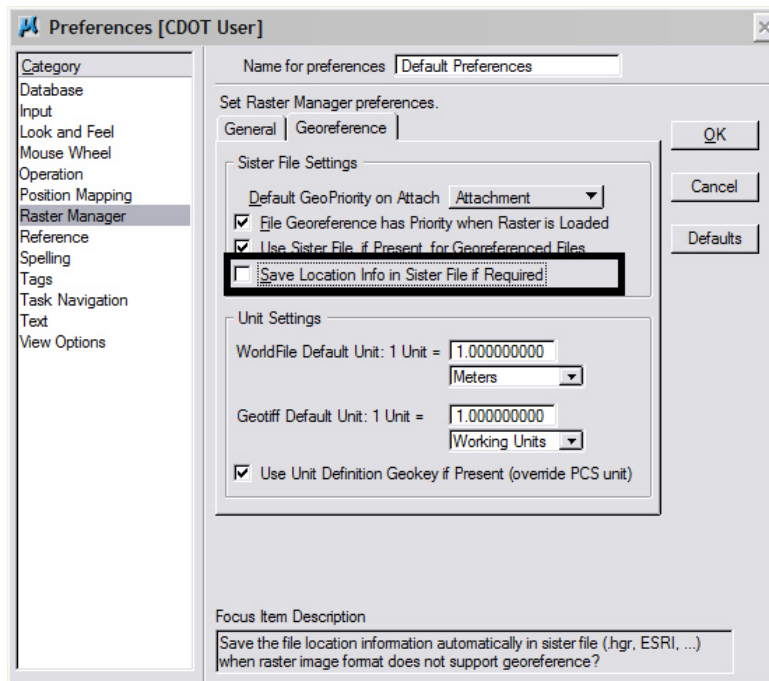


CDOT Using Georeferenced Images in Raster Manager.pdf

- Place a check in the checkbox next to the preference *Use Sister File, if Present, for Georeferenced Files*. A sister file is a companion file to the image file that contains placement or georeference information. A world file is one type of sister file. Both .tif and .jpg images will typically require a world file for correct placement.

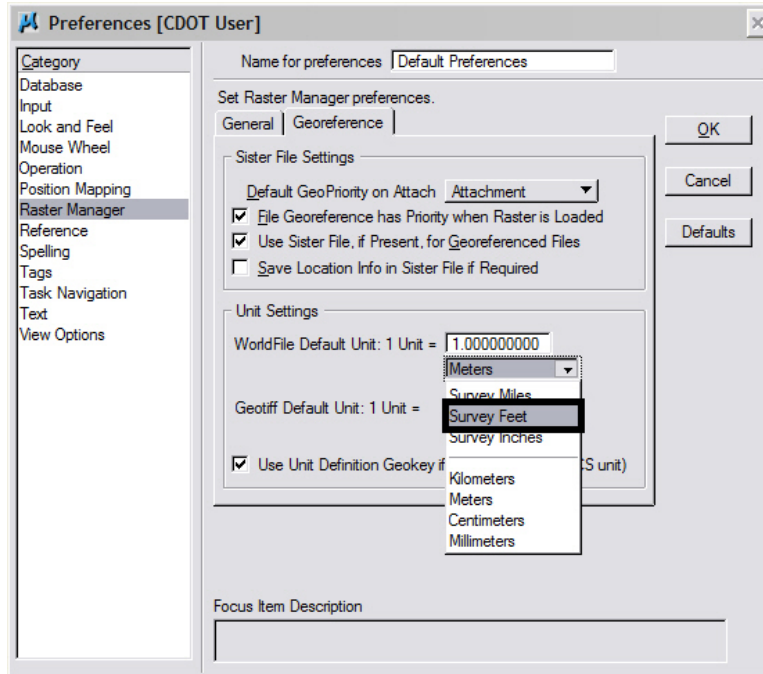


- Uncheck the checkbox next to the preference for *Save Location Info in Sister File*. This will guard against accidentally moving the raster image and updating the world file with incorrect coordinates.

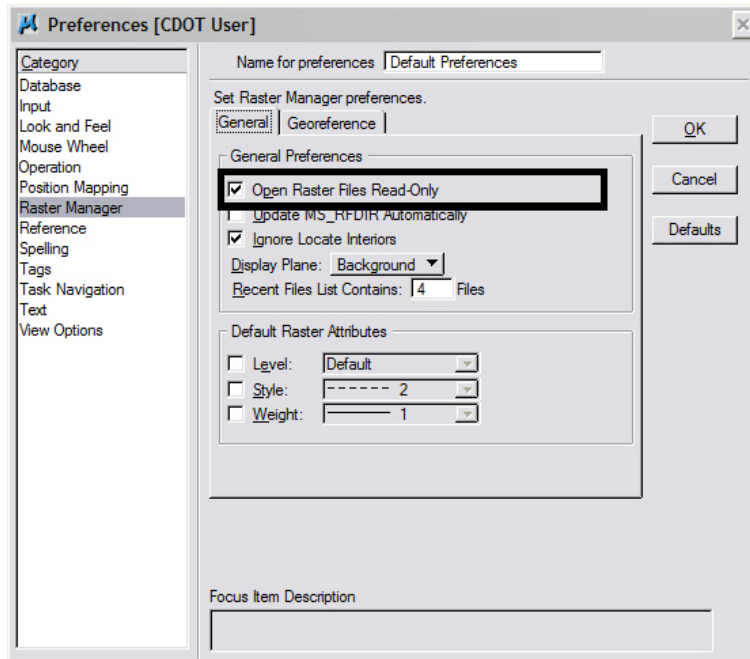


CDOT Using Georeferenced Images in Raster Manager.pdf

- The final preference adjustment setting under the Georeference tab is for the **WorldFile Default Units**. Select **Survey Feet** from the drop-down list so that **Raster Manager** will interpret the world file units as survey feet instead of meters.

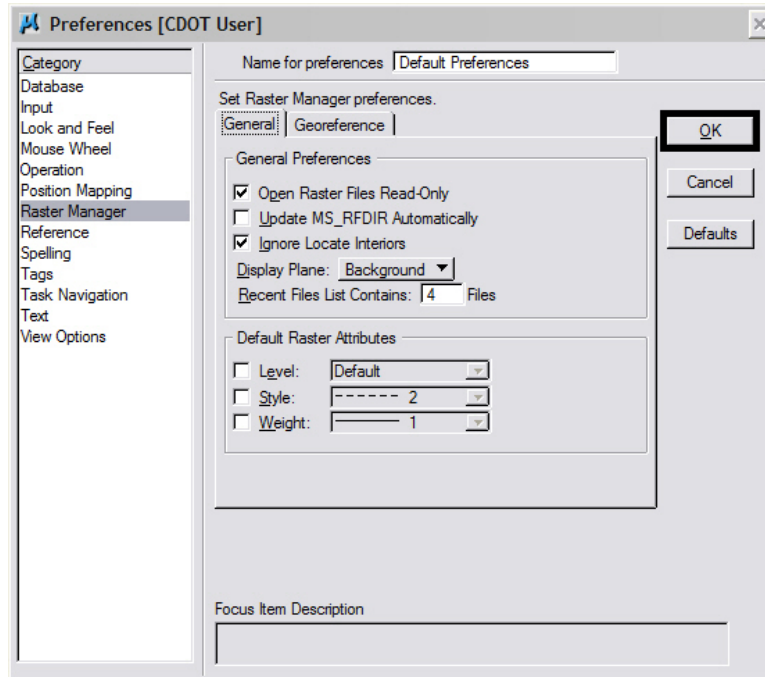


- There is one setting under the General tab that should be set. The **Open Raster Files Read-Only** preference should typically be kept checked on. Turn this preference off if required to change the contrast and brightness display settings in the images for printing purposes. In some cases changing the display settings has no effect on the printed output if the image is attached read-only.



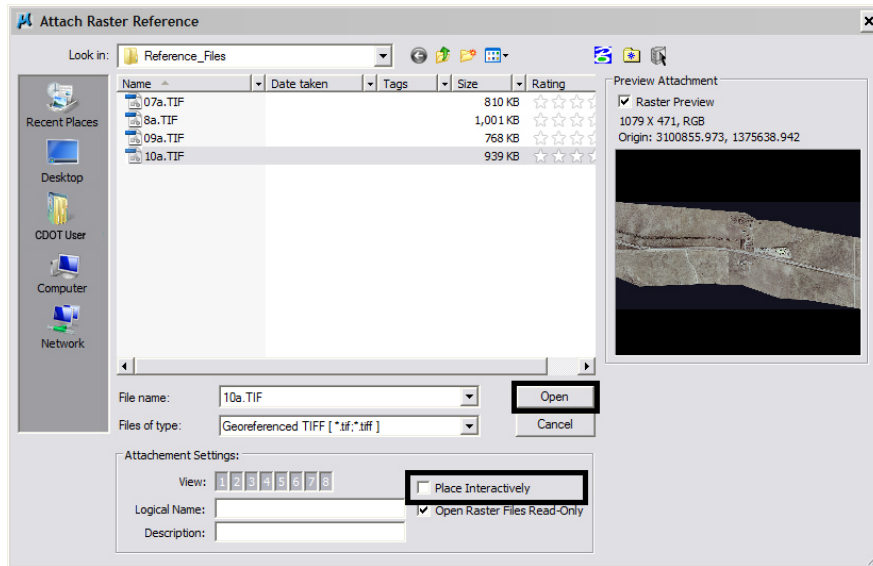
CDOT Using Georeferenced Images in Raster Manager.pdf

10. <D> OK button to save these preferences. Once these preferences have been saved they should not have to be changed again.

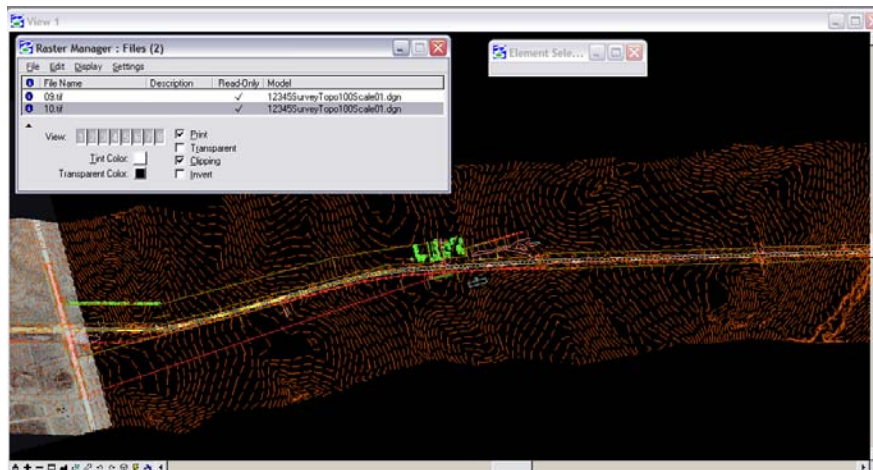


Placing Georeferenced Images

1. From the MicroStation pull-down menu select **File > Raster Manager**. The **Raster Manager** dialog will appear.
2. From the **Raster Manager** menu select **File > Attach**. The **Attach** dialog will appear.
3. Navigate to the location of the raster image files and select the **file(s)** to attach.
4. It is important that the **Place Interactively** checkbox is unchecked. **<D> Open** to attach the image(s).

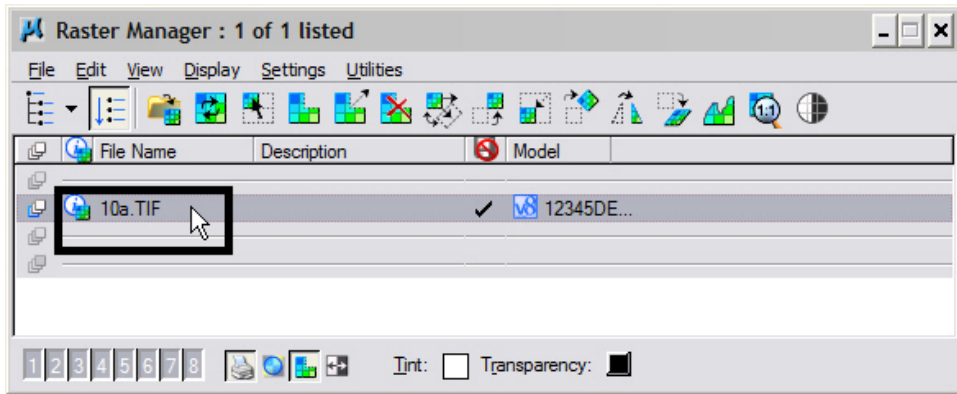


5. After attaching the image a **Fit View** may be needed to display the image.
6. If the image does not appear in the correct location adjust the placement location.
7. Select the image from the **Raster Manager** dialog box.

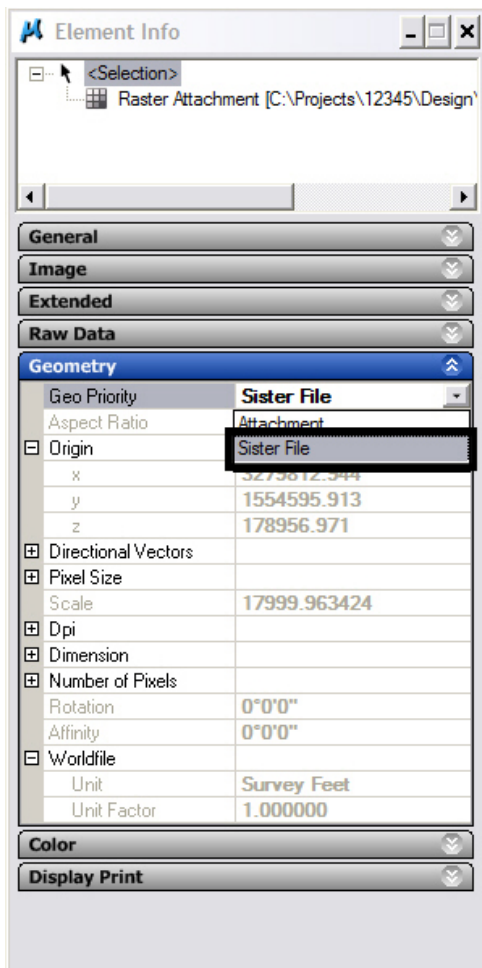


CDOT Using Georeferenced Images in Raster Manager.pdf

8. From **Raster Manager** select **Settings > Attachment**. The Attachment Settings dialog will appear.
9. Select the **Location** tab.
10. <D> <D> on the File Name to see **Element Info**.



11. Select the **Geometry** tab and verify that the **Geo Priority** setting is set to **Sister File**. If it is not, <D> on the pull down and change the setting. This should show the correct **WorldFile Unit** setting also.



CDOT Using Georeferenced Images in Raster Manager.pdf

12. **Fit View** to display the image. The image should now appear in the correct location.

